



## APS Strives to Take Your EP Research to the Next Level

APS has the facility, staff, and expertise to take on all types of preclinical research in the field of electrophysiology:

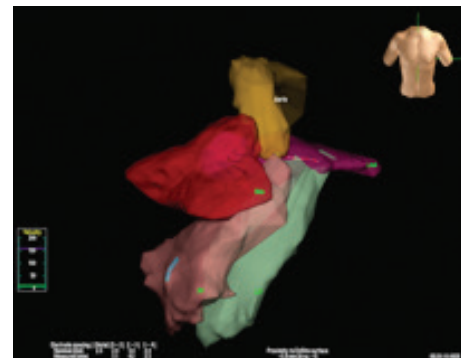
- 71,000 ft2 research facility located just outside Minneapolis, minutes from MSP International Airport
- Four staff interventionalist and three staff surgeons with a combined 75+ years of preclinical device research
- Onsite housing for over 500 large animals
- Large and Small Animal Feasibility and Safety Studies, Biocompatibility, Histopathology, and In-House Clinical Pathology services available
- GLP Compliant, AAALAC accredited, ISO17025 Accredited



## At the Forefront of EP Preclinical Research

APS has put the time and effort into training on the appropriate techniques, and acquiring the right equipment, to give itself the distinction of being the premier destination for the preclinical evaluation of electrophysiology devices and procedural techniques.

- APS has staff experienced in cardiac ablation, transeptal access, and anatomical and electrical mapping.
- Three Siemens Catheterization Lab Suites
  - Two Siemens Axiom Artis Suites
  - One Siemens Artis Zee Suite
- Bard Labsystem Pro EP Recording System - with 12-Lead EKG and 160 Intracardiac Channels
- Bloom DTU-215B Electrophysiology Stimulator
- St. Jude Medical Ensite NavX Mapping System
- Siemens Acuson Cypress - providing high quality ultrasound imaging
- Rotational Angiography using Siemens DynaCT
- High Definition video conferencing equipment (Vidyo)



**Where Medical Innovations Take Flight**